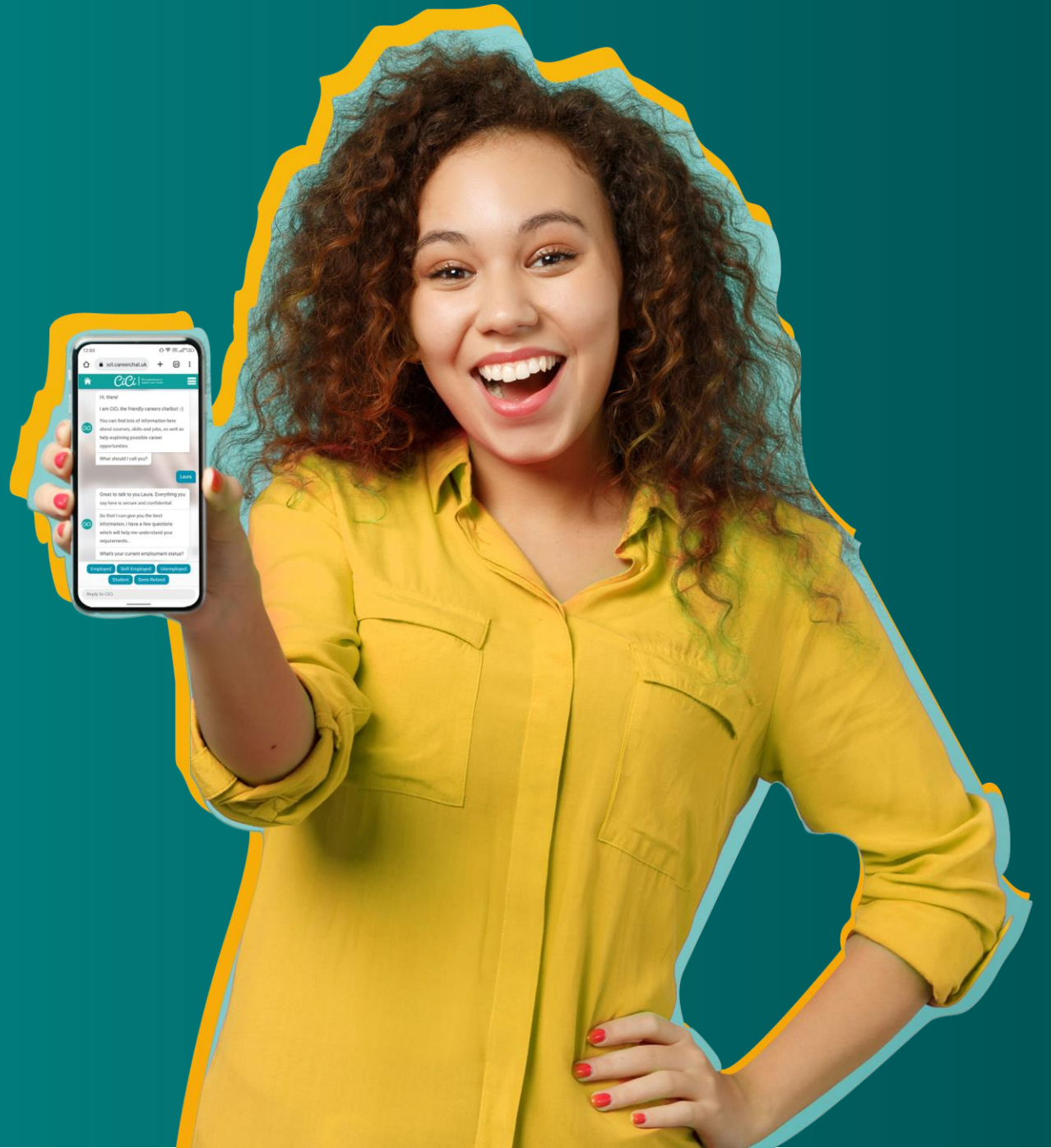


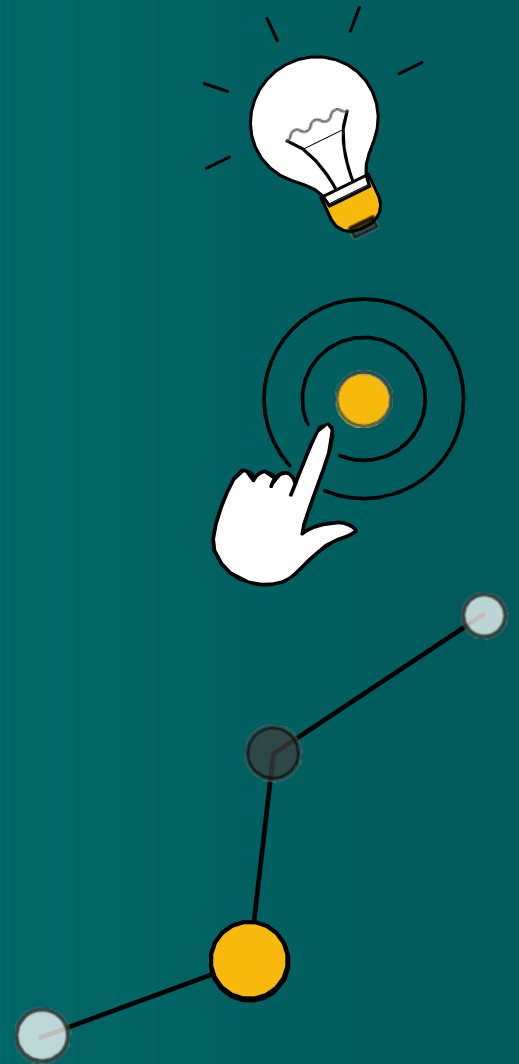
CiCi

The powerhouse to
support your career



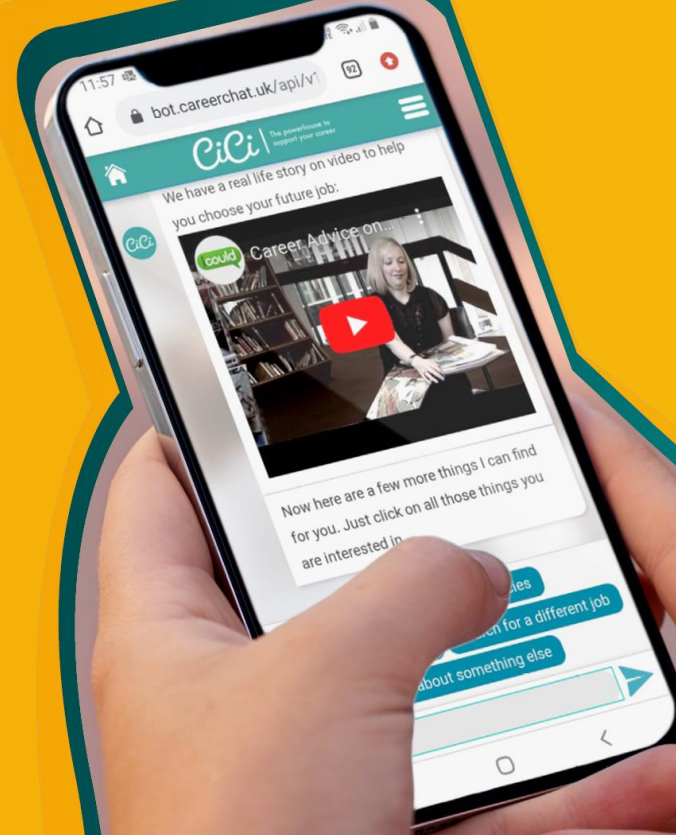
CiCi is a chatbot that supports personalised career exploration for young people and adults, giving them access to current and relevant careers information in a single place.

Lighten the workload of career practitioners and improve the quality of time spent supporting students by providing 24/7 impartial and confidential careers information and advice.



Highly Personalised

The architecture that sits behind CiCi is composed of elements that can be customised, creating a bespoke experience for your clients aligned with your organisation's needs. CiCi can be branded to match the look and feel of your organisation. Each conversation flow has been developed based on best practices in careers conversations



Some organisations who have been
a part of the journey so far:

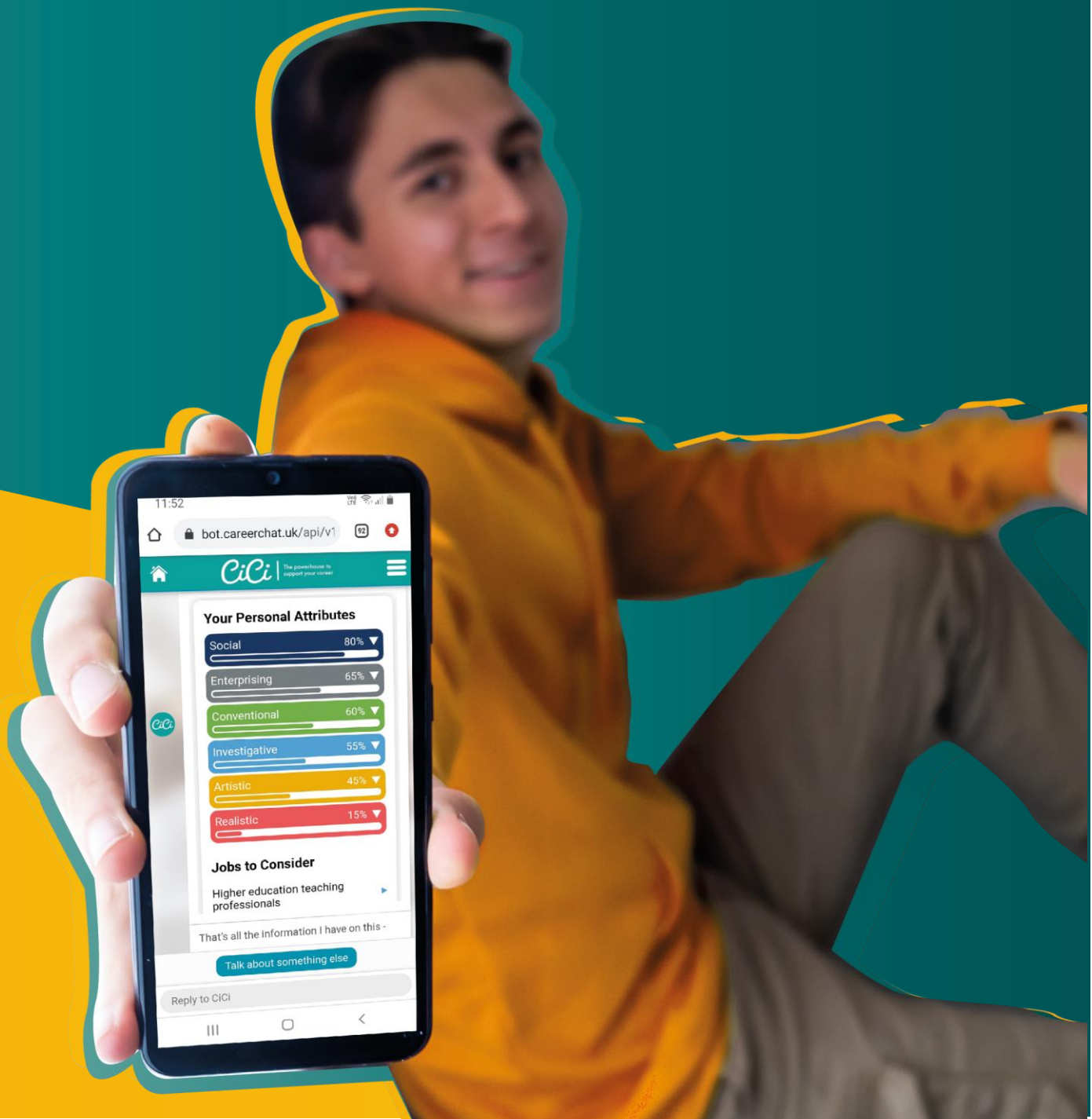
nesta  **Challenges**



University
of Exeter

Forbes

City & Guilds



CiCi in action: Embedded & pilot areas

Coventry - HE

Derby - FE and 3-19 school

Dorset - School / MAT

**London - MAT, adult employability programme,
Faceworks supporting Ukrainians in transition**

Newcastle - Redundancy project

Oxford - School / MAT

Thames Valley - Supporting vulnerable young people

Warwickshire - Adult employability programme



ANALYTICS

CiCi comes with a personalised dashboard of metrics, providing comprehensive data analytics

Helps align your service provision with the reality of the types of searches and occupations individuals are exploring.

This can enable accurate comparison against local, regional and national LMI.



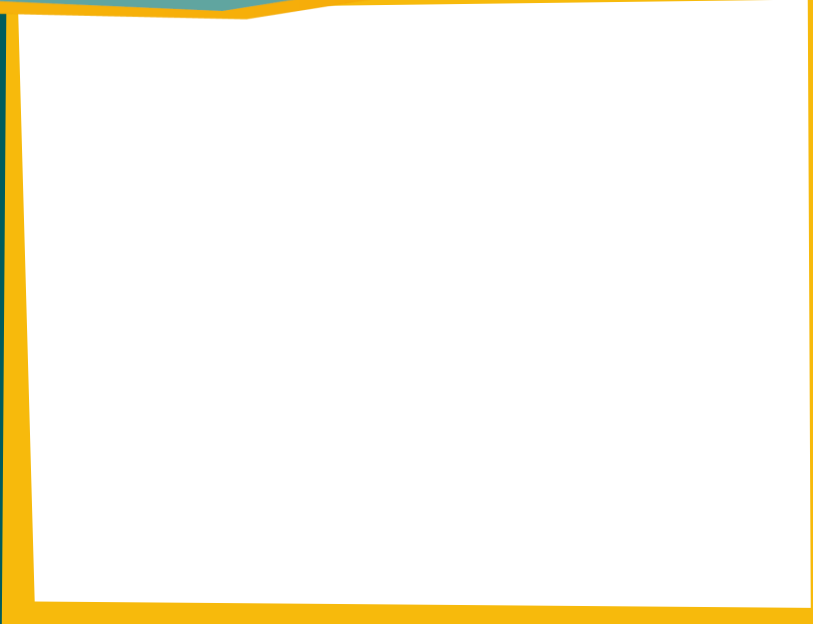
Gatsby Benchmarks & Evidence for Ofsted

The CiCi dashboard gathers live information to evidence student, teacher and parent career exploration.

CiCi can assist schools & colleges in achieving the Gatsby benchmarks of 'Good Career Guidance' & Quality Standards.



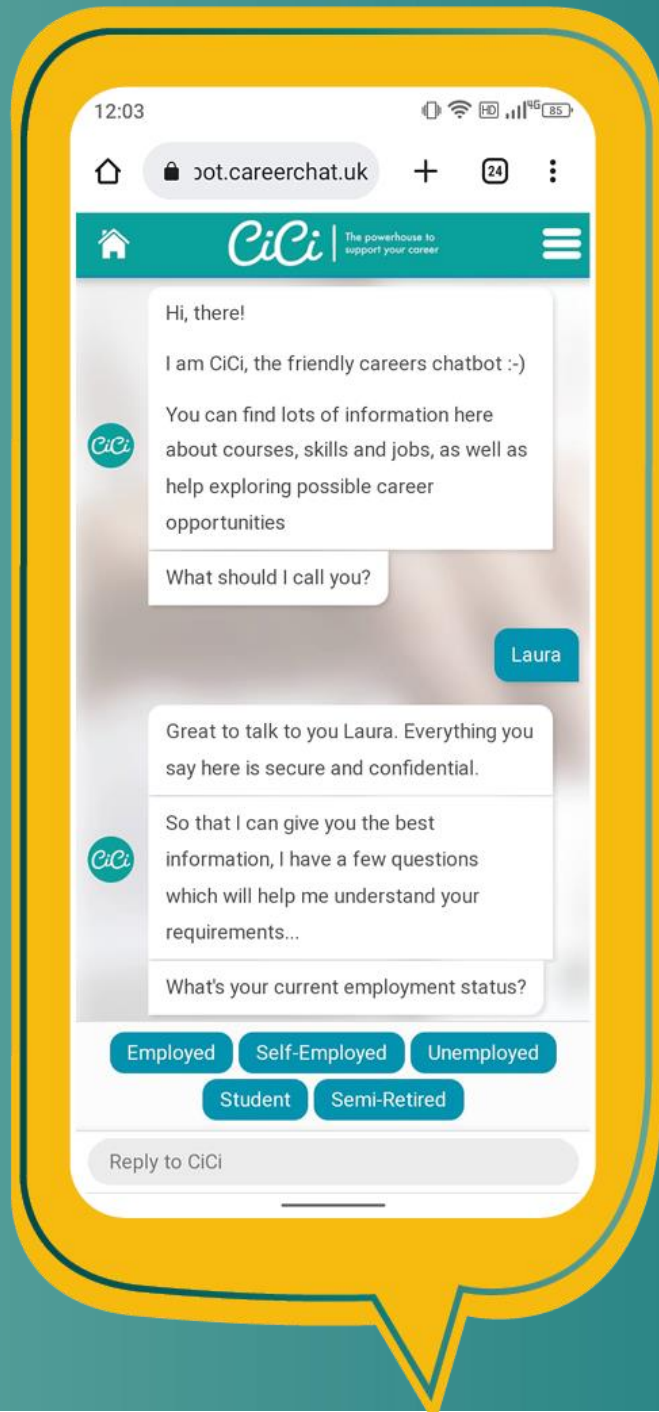
LIVE DEMO



Follow us



Follow us

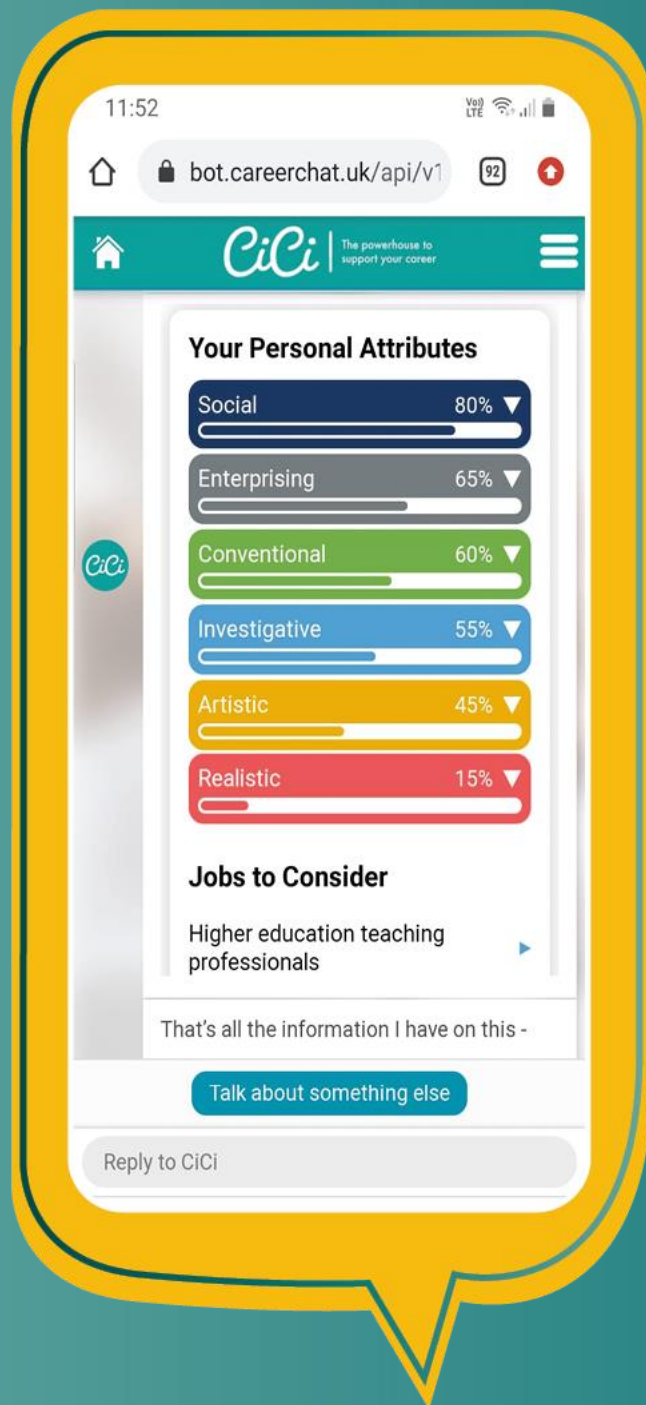


→ Accessible

CiCi provides a multilingual experience for users translating the chat into 40+ languages.

Text-to-speech technology allows users to focus on the content rather than on the act of reading

CiCi can be embedded into your organisation's website and internal systems and can work across all devices.



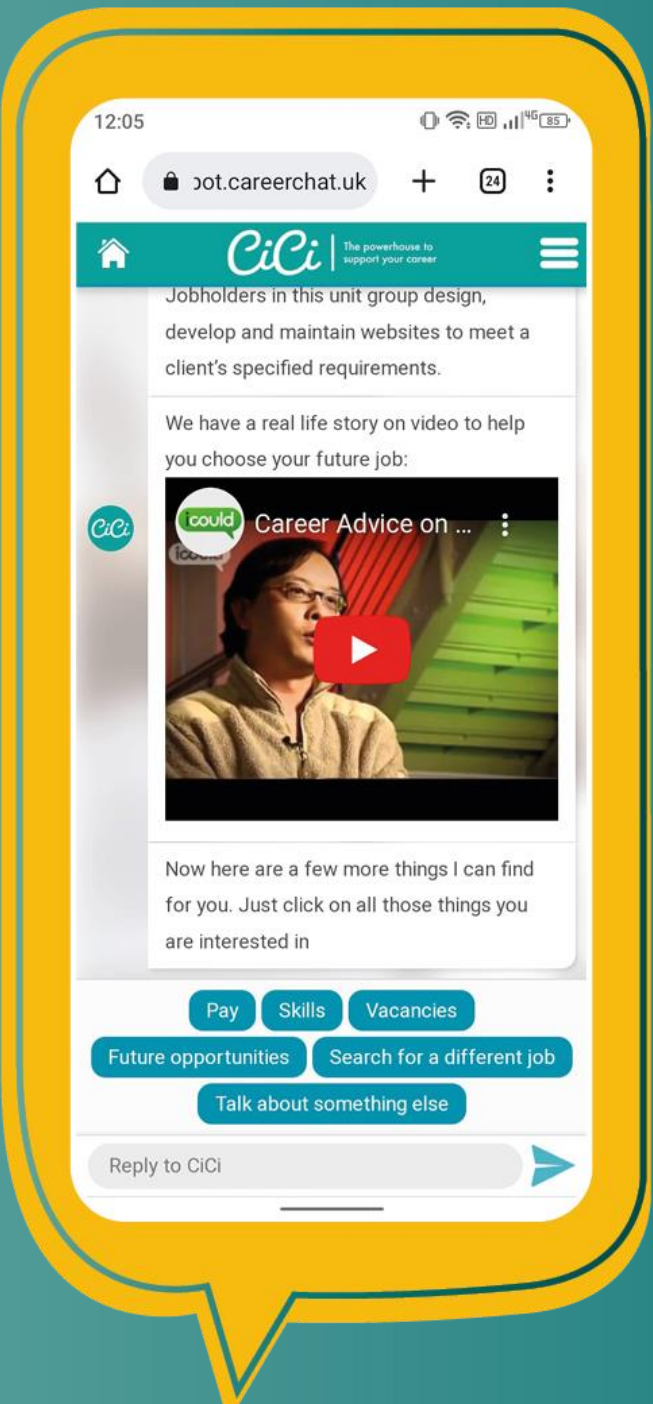
→ CiCi and AI

CiCi uses a limited application of Natural Language Processing (NLP)

We have an experimental Free Chat version which is fully NLP based

We are developing a new version incorporating GPT3

Our initial work has been around our CV flow but this will be extended in the next two months



➔ Comprehensive

Job and Skills information profiles

26,000+

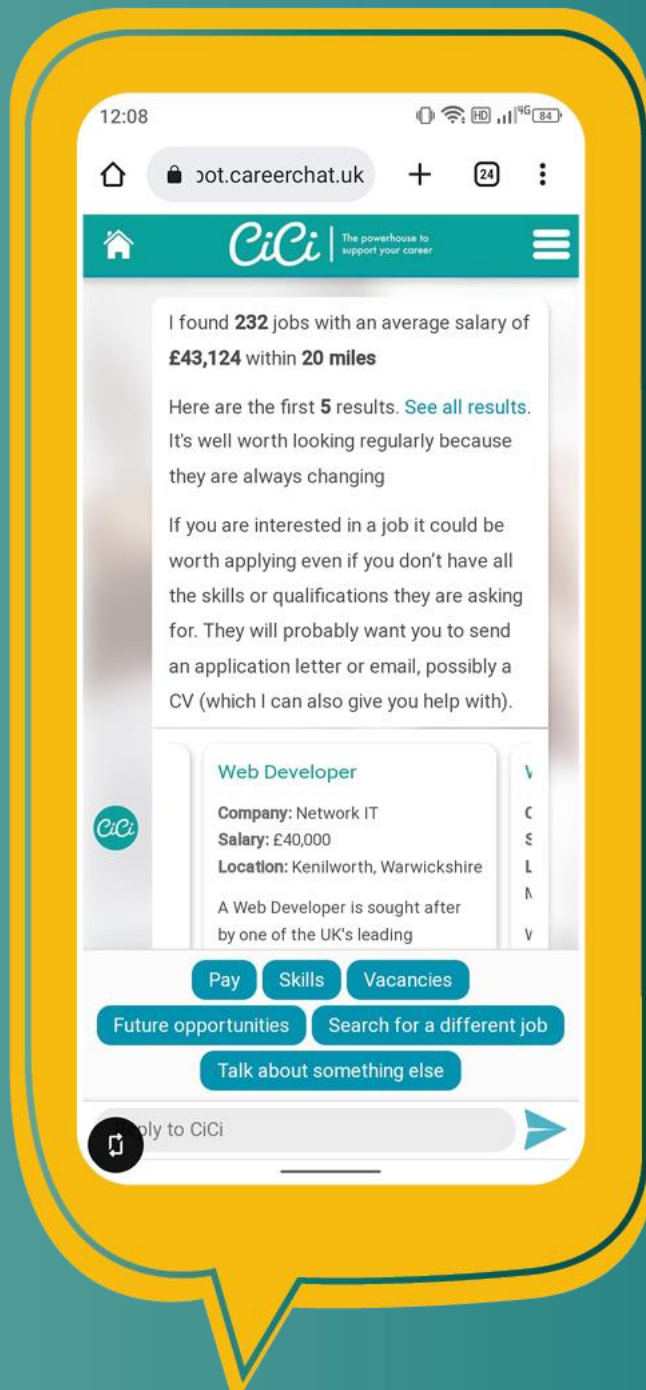
ESFA course information

40,000+

Inspirational career journey video shorts

1,500+

Apprenticeships and T-Levels

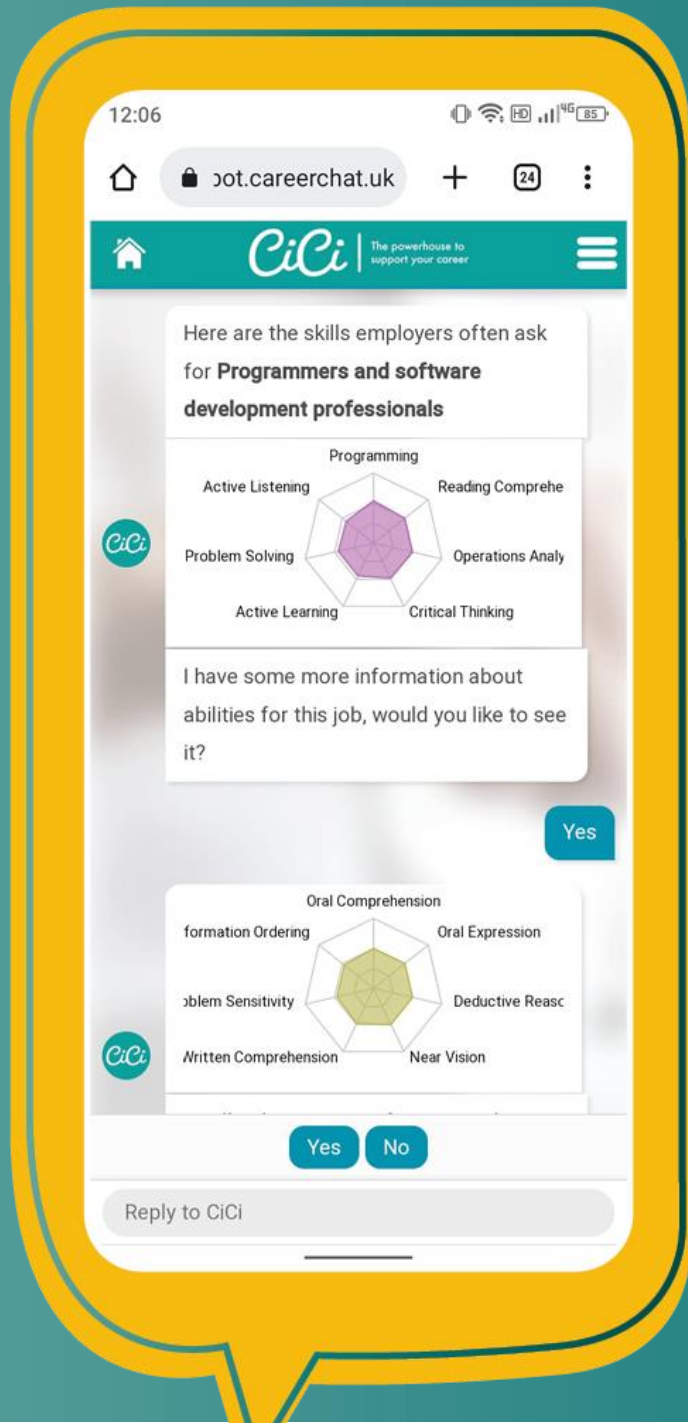


➔ Job information, vacancies & LMI

Access live job vacancies & apply direct

25,000+ full & part-time jobs in England, Scotland and Wales

Quality-assured careers and labour market information 'all in one place'



Going forward with AI:

→ Bringing together AI with reliable LMI

→ Developing local LMI with AI

→ Improving skills forecasting and understanding career pathways

→ Referral to a human adviser

www.careerchat.Uk

Contact us for more information
or to book a demo

lauren@cicichat.co.uk

